



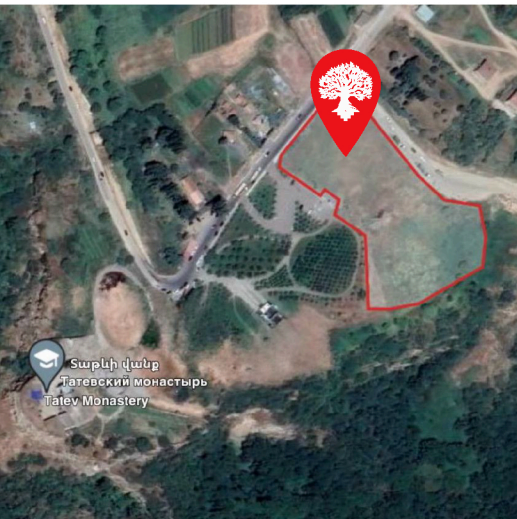
«TREE OF LIFE» BENEVOLENT INITIATIVE CULTIVATING AN ORCHARD IN TATEV

PROJECT SUMMARY



In a testament to the enduring spirit of Ruben Vardanyan's philanthropic vision and mission and advancing his projects, the Development Agency "We Are Our Mountains" intends to plant a new orchard in Tatev. This initiative aims to cultivate a green space adjacent to the Tatev Monastery and the Wings of Tatev ropeway, symbolizing vitality and renewal.

The orchard will serve as a tribute to Ruben Vardanyan's dedication to the well-being of his people and homeland, while each tree will echo the support of project participants for Ruben Vardanyan and our compatriots unjustly detained in Azerbaijan.



With plans to plant 1,000 trees – including apple, pear, cherry, and prune varieties – the planting commenced on April 7. Throughout April, additional trees will be planted, culminating in the orchard's official opening ceremony in May. Central to the inauguration will be the planting of the symbolic "Tree of Life" – a plane tree (known as Sosi, Chinar, Tnjri in Armenian) – a revered symbol in Armenian culture signifying resilience, compassion, nobility, and longevity. Deeply intertwined with Armenian traditions and history, this sacred tree embodies the enduring spirit of the Armenian people.

GOAL

\$ 125 000

MAIN INFORMATION

Partners

Wings of Tatev Ropeway,
"Tatev Revival" Foundation

Location

Syunik region, Tatev community

Implementation period

April-May 2024

PARTICIPATION IN THE PROJECT

Get involved to help us demonstrate the resilience of the Armenian people while making our country greener.

- Plant a Tree - the price of a tree planting certificate is \$25
- Support the project

Funds collected within the project's framework will be allocated towards the development of the Tatev community.

SUSTAINABILITY

The orchard will boast a drip irrigation system, ensuring efficient watering, and will be tended to by the "Wings of Tatev" Ropeway team in collaboration with local residents. Future plans involve utilizing the orchard's yield to establish a socially oriented mini-production venture.